



To: Bidders for the Trail of Tears Phase 2

From: Dan Wright, City Manger

Date: November 16, 2017

RE: Trail of Tears Phase 2
Addendum Number 1 to the October 27, 2017 Bid Document

Below are clarifications on the "Issue for Bid" plan set and responses to questions received from contractors during the bidding process prior to 10:00 a.m. Wednesday, November 15, 2017:

1. Clarification: **All bids are due to by 2:00 p.m. on Wednesday, November 29, 2017**

2. Question: "Just to confirm you are looking for a landscaping and irrigation price?"

Response: Contractors shall provide pricing for all items included within the bid item list on the proposal form, page 9. Landscape and irrigation are not included within the project.

3. Question: "Could we receive further clarification of the limits as well as the total depth to be removed at the 5,241 SF of gravel per CP-01?"

Response: Contractors shall remove a 104 CY area (70'x60'x8").

4. Question: "Can the excavated gravel be stockpiled for future use by the City on property they currently own?"

Response: The city shall provide a location on city property for the contractor to stockpile for future use.

5. Question: "Do you have submittals from Phase 1 for the weathered steel bands and saddle brackets so that we can ensure we match them as closely as possible?"

Response: The weathered steel bands and saddle brackets shall match those existing along the Trail of Tears Phase 1 project. The Phase 1 signs were custom fabricated through:

*Haskell Sears Design
213 Center Street
Rossville, GA 30741
(706) 207-0599*

6. Question: "Do you have submittals from Phase 1 for the removable and fixed bollards so that we ensure we match them as closely as possible?"

Response: The contractor shall remove the existing bollards as noted and reuse/relocate as noted on the plans.

7. Question: "I see Presto has been called for on the drawings as a geotextile fabric (specifically on the gravel parking lot). With Propex Geotextile Fabric being manufactured there in Ringgold, are we able to use this fabric to help support the local economy in Ringgold?"

Response: The city shall approve material substitutions which are deemed equivalent.

8. Question: "Item Number 603-7000 denotes plastic filter fabric and says "NO TENSAR GRID." However, the detail 9/CD-01 indicates that tensor grid is supposed to go in the areas where root bridging takes place. Can you clarify if these areas are supposed to receive tensor grid or not?"

Response: The root bridging filter fabric shall be the TenCate Mirafi 500x (see attached specifications) or approved equal.

9. Question: "What is the specification for the bench shown on 2/CD-01?"

Response: See attached bench specification. Contractor shall provide same or approved equivalent.

END OF DOCUMENT

Mirafi[®] 500X



Mirafi[®] 500X geotextile is composed of high-tenacity polypropylene yarns, which are woven into a stable network such that the yarns retain their relative position. Mirafi[®] 500X geotextile is inert to biological degradation and resistant to naturally encountered chemicals, alkalis, and acids.

TenCate Geosynthetics Americas Laboratory is accredited Geosynthetic Accreditation Institute – Laboratory Accreditation Program ([GAI-LAP](#)).

Mechanical Properties	Test Method	Unit	Minimum Average Roll Value	
			MD	CD
Grab Tensile Strength	ASTM D4632	lbs (N)	200 (890)	200 (890)
Grab Tensile Elongation	ASTM D4632	%	15	15
Trapezoid Tear Strength	ASTM D4533	lbs (N)	75 (334)	75 (334)
CBR Puncture Strength	ASTM D6241	lbs (N)	700 (3115)	
			Maximum Opening Size	
Apparent Opening Size (AOS)	ASTM D4751	U.S. Sieve (mm)	40 (0.425)	
			Minimum Roll Value	
Permittivity	ASTM D4491	sec ⁻¹	0.05	
Flow Rate	ASTM D4491	gal/min/ft ² (l/min/m ²)	4 (163)	
			Minimum Test Value	
UV Resistance (at 500 hours)	ASTM D4355	% strength retained	70	

Physical Properties	Unit	Roll Sizes		
Roll Dimensions (width x length)	ft (m)	12.5 x 432 (3.8 x 132)	15 X 360 (4.57 x 110)	17.5 x 309 (5.3 x 94.2)
Roll Area	yd ² (m ²)	600 (502)		

Disclaimer: TenCate assumes no liability for the accuracy or completeness of this information or for the ultimate use by the purchaser. TenCate disclaims any and all express, implied, or statutory standards, warranties or guarantees, including without limitation any implied warranty as to merchantability or fitness for a particular purpose or arising from a course of dealing or usage of trade as to any equipment, materials, or information furnished herewith. This document should not be construed as engineering advice.

Mirafi[®] is a registered trademark of Nicolon Corporation.

Copyright © 2015 Nicolon Corporation. All Rights Reserved.

365 South Holland Drive
Pendergrass, GA 30567

Tel 706 693 2226
Tel 888 795 0808

Fax 706 693 4400
www.tencate.com

FGS000520
ETQR37



SPEC SHEET : 166-1080

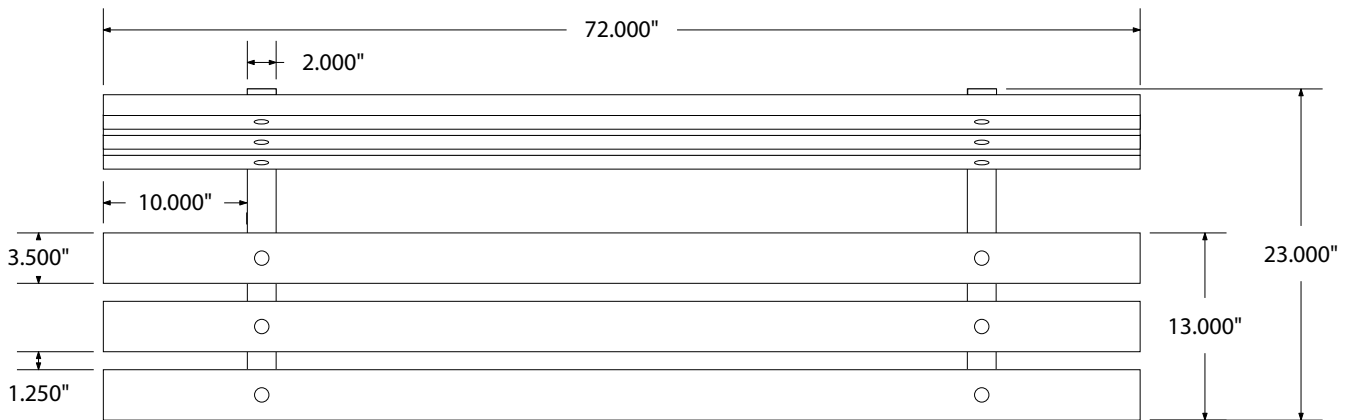
6' WOODEN BENCH WITH BACK *pine*

Wt. 60 lbs

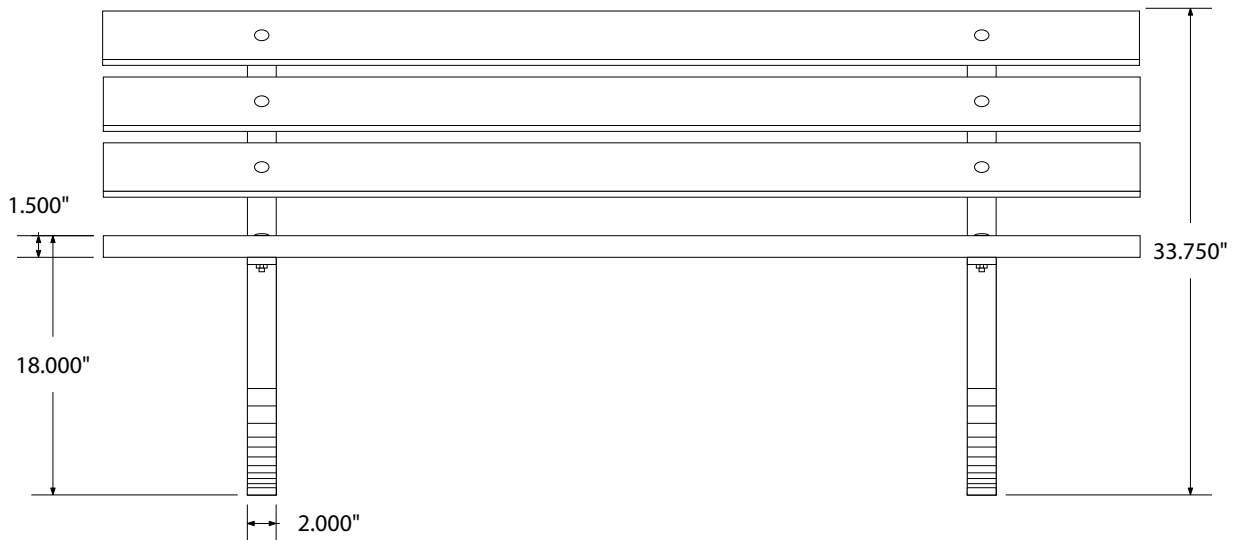
photo



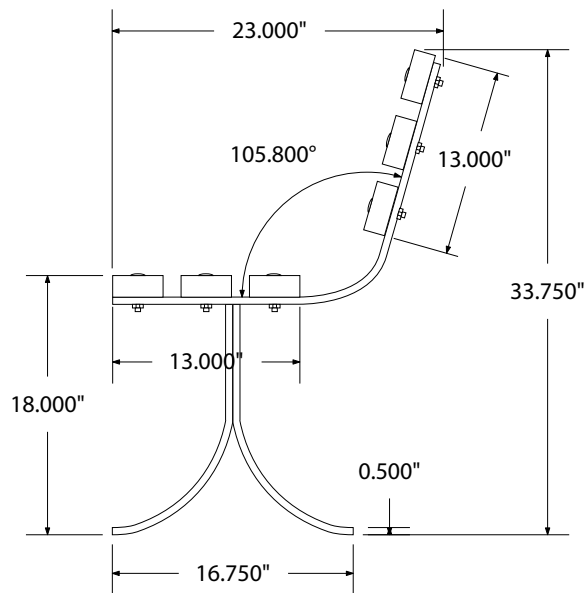
top view



front view



side view



product finish



Wooden Surfaces:
• Seats - Pine planks

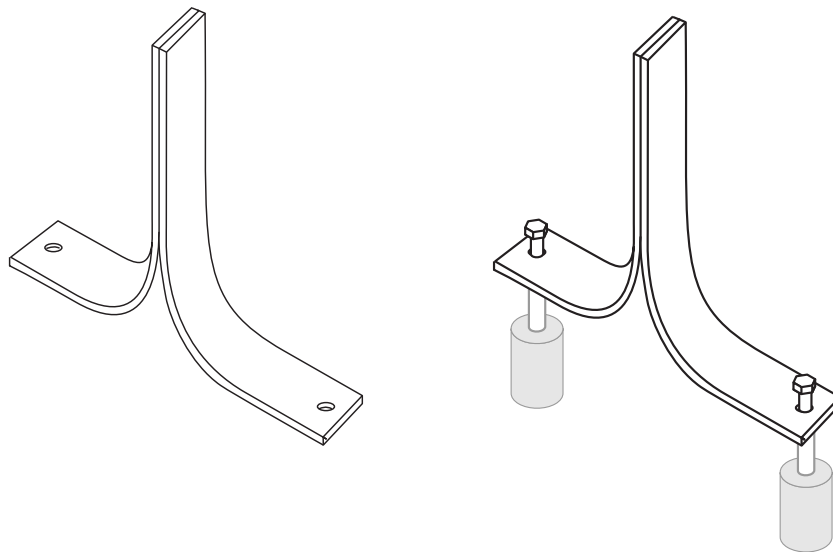
Construction:
• ½" thick zinc-rich primed, blackpowder coated steel strap understructure
• Nuts, washers and bolts - galvanized steel

mounting types

P = Portable : no mount

SM = Surface Mount:
concrete anchors
through discs welded
to legs

IG= In-Ground:
J-rods set in concrete
through discs welded
to legs



PORTABLE

SURFACE MOUNT